



CEMENTED CARBIDE ROD

硬质合金圆棒



株洲美特优硬质合金
Zhuzhou Meetyou Carbide



About Us

关于我们

湖南省高新技术企业 湖南省著名商标 湖南省专精特新企业

株洲美特优硬质合金有限公司是一家集硬质合金制品开发、设计、生产、销售于一体的高新技术企业。公司成立于2001年，现有各类固定资产超过一亿元，占地面积超过25000多平方米。公司的主要产品有：硬质合金棒材、硬质合金板材、硬质合金冷镦模及众多非标异型产品，广泛应用于机械、矿山、电子、航天航空等领域，年产能力超过500吨。十几年来公司稳健发展，在客户中拥有很高的信誉度，公司多次被评为“守合同重信用企业”“湖南省冶金行业先进集体”；“美特优”牌硬质合金系列产品被评为“中国名优品牌”，“美特优”商标被评为“湖南省著名商标”，公司持续创新荣获“科技项目创新奖”“专利资助奖”“创响新时代中国创翼奖”等多项荣誉，并且拥有五十多种发明专利和实用新型专利。

Zhuzhou Meetyou Cemented Carbide Co., Ltd. is a private technology enterprise integrated with development, design, production and marketing of cemented carbide products. The company was established in 2001. Now, its total fixed assets exceed 100 million RMB, and the floor area surpasses 25,000m². The company's products mainly include cemented carbide rods, special disc cutters for electronic circuit board industry, special cold-heading stamping dies for standard component industry, and numerous non-standard abnormal-shape products.

Recognized world-wide for quality carbide cutting tool blanks & preforms for a variety of applications, beyond an extensive product line, Meetyou Carbide focus on customer service deeply in heart.





NEW

圆棒新工艺

New technique

World unique technique of carbide rods

我公司联合德国世泰科、美国陶氏、日本TAMAGAWA等众多世界知名企业。共同研发并推出了多款超高性价比的刀具新材料，我们期待寻求更多的战略合作伙伴，为刀具行业提供创新服务。

我们引进日本TAMAGAWA最新成型技术和装备，大大提高了生产效率。
交货周期短，质量稳定性高。

世界首创 全球唯一

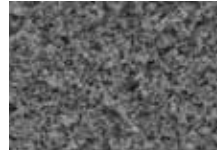
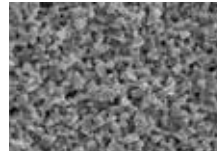

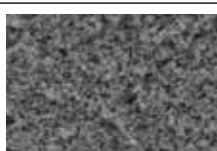
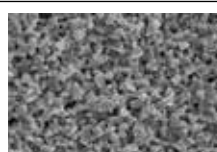

- Automatic Press from TAMAGAWA
- Premium powder from H.C.Starck
- h6 polished, chamfered carbide rods

采用德国世泰科粉末技术和原料，充分保证了我公司生产的棒料具有良好的综合性能和质量稳定性。

常规尺寸的圆棒交货为平头倒角及外圆精磨，这给刀具制造商提供了更加快速和便捷的服务。

Grade 牌号		MT09U	MT10S	MT12S	MT25S	MT06U	MT20.8
ISO range		K10-K20	K20-K40	K20-K40	K20-K40	K05-K10	K40-K50
WC + other carbides	%	91	90	88	88	93.5	85
Co	%	9	10	12	12	6.5	15
WC grain size 晶粒度	um	0.4	0.8	0.6	0.4	0.6	0.8
Density 密度	g/cm ³	14.50	14.42	14.12	14.10	14.85	13.95
Hardness 硬度	Hv30	1890	1600	1580	1750	1890	1350
	HRA	93.5	91.5	91.2	92.5	93.5	89.5
Transverse rupture strength 抗弯强度	N/mm ²	3800	4100	4200	4400	3700	3800
	kpsi	551	590	609	638	540	551
Fracture toughness 断裂韧性	Mpa.m ^{1/2}	10.2	14.2	14.7	13.5	10.1	17.5
Young's modulus 杨氏模量	kpsi	86,780	85,360	80,860	80,000	91,000	79,086
Compressive strength 抗压强度	kpsi	1,145	1,015	1,010	1,109	1,156	957

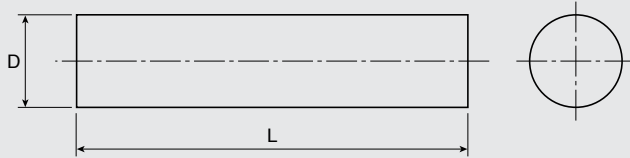
Properties & Application of Main Grades

Grade	Properties and application	Micro structure
MT09U	<ul style="list-style-type: none"> Ultra fine grain WC with 9% Co Very high wear resistance and excellent deformation resistance High cutting speed milling, finishing For use on hardened steel, plastics, fiber reinforced materials, HRC55-65 	
MT10S	<ul style="list-style-type: none"> Submicron grain WC with 10% Co Very high wear resistance and excellent deformation resistance High cutting speed milling & drilling For general usage and suitable for all kinds of material below HRC 45 	
MT12S	<ul style="list-style-type: none"> Submicron grain WC with 12% Co High toughness and wear resistance Specially designed for machining stainless steel For use on stainless steel, nickel based alloys, titanium alloy and special alloy 	
MT25S	<ul style="list-style-type: none"> Ultra fine grain WC with 12% Co Very high toughness and high wear resistance Suitable for finishing processing and roughing of steels with hardness between 45 and 55 HRC, steels for surface treatments, nickel and nickel alloys. 	
MT06U	<ul style="list-style-type: none"> Submicron grain WC with 6% Co Very high wear resistance High cutting speed milling For drilling and milling of plastic composites, PCB, ceramics, woods and MDF 	
MT20.8	<ul style="list-style-type: none"> Fine grain WC with 15%Co High wear resistance High toughness and strength For use on solid carbide punches 	

WITHOUT COOLANT HOLE

Unground 330mm

实心毛坯长棒



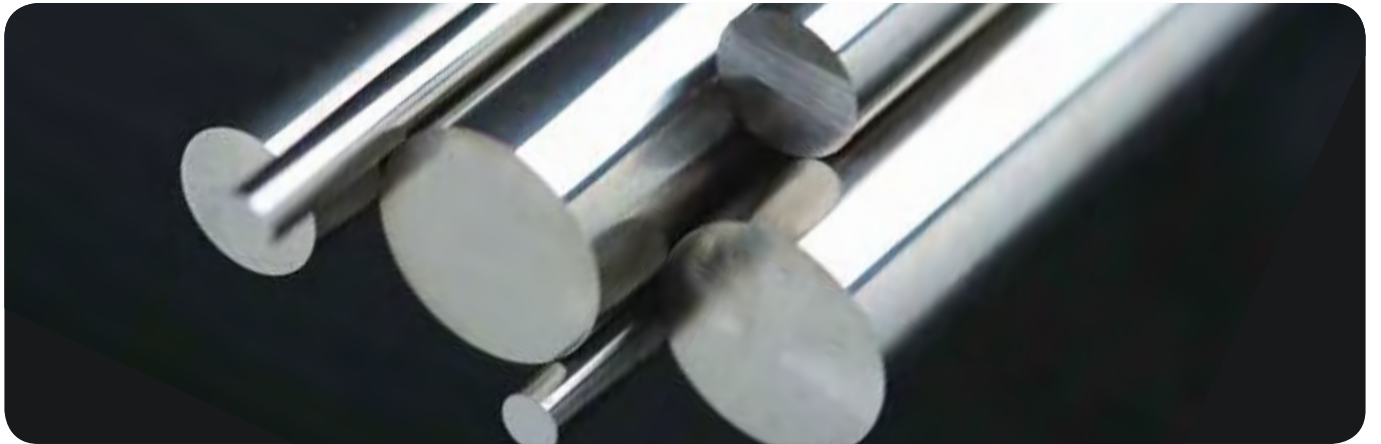
Type	D (mm)	Tolerance D(mm)	L (mm)	Tolerance L(mm)
BΦ0.5×330	0.5	+0.10/0.25	330	-0/+10.0
BΦ1.0×330	1.0	+0.10/0.25	330	-0/+10.0
BΦ1.2×330	1.2	+0.10/0.25	330	-0/+10.0
BΦ1.6×330	1.6	+0.10/0.25	330	-0/+10.0
BΦ1.8×330	1.8	+0.10/0.25	330	-0/+10.0
BΦ2.3×330	2.3	+0.10/0.35	330	-0/+10.0
BΦ2.5×330	2.5	+0.10/0.35	330	-0/+10.0
BΦ3.0×330	3.0	+0.10/0.35	330	-0/+10.0
BΦ3.5×330	3.5	+0.10/0.35	330	-0/+10.0
BΦ4.0×330	4.0	+0.20/0.35	330	-0/+10.0
BΦ4.5×330	4.5	+0.20/0.35	330	-0/+10.0
BΦ5.0×330	5.0	+0.20/0.40	330	-0/+10.0
BΦ5.5×330	5.5	+0.20/0.40	330	-0/+10.0
BΦ6.0×330	6.0	+0.20/0.40	330	-0/+10.0
BΦ6.5×330	6.5	+0.20/0.40	330	-0/+10.0
BΦ7.0×330	7.0	+0.20/0.40	330	-0/+10.0
BΦ7.5×330	7.5	+0.20/0.40	330	-0/+10.0
BΦ8.0×330	8.0	+0.20/0.40	330	-0/+10.0
BΦ8.5×330	8.5	+0.20/0.40	330	-0/+10.0
BΦ9.0×330	9.0	+0.20/0.40	330	-0/+10.0
BΦ9.5×330	9.5	+0.20/0.40	330	-0/+10.0
BΦ10.0×330	10.0	+0.20/0.40	330	-0/+10.0
BΦ10.5×330	10.5	+0.20/0.50	330	-0/+10.0
BΦ11.0×330	11.0	+0.20/0.50	330	-0/+10.0
BΦ11.5×330	11.5	+0.20/0.50	330	-0/+10.0
BΦ12.0×330	12.0	+0.20/0.50	330	-0/+10.0
BΦ12.5×330	12.5	+0.20/0.50	330	-0/+10.0
BΦ13.0×330	13.0	+0.20/0.50	330	-0/+10.0
BΦ13.5×330	13.5	+0.20/0.50	330	-0/+10.0

Type	D (mm)	Tolerance D(mm)	L (mm)	Tolerance L(mm)
BΦ14.0×330	14.0	+0.20/0.50	330	-0/+10.0
BΦ14.5×330	14.5	+0.20/0.50	330	-0/+10.0
BΦ15.0×330	15.0	+0.20/0.50	330	-0/+10.0
BΦ15.5×330	15.5	+0.20/0.50	330	-0/+10.0
BΦ16.0×330	16.0	+0.20/0.50	330	-0/+10.0
BΦ16.5×330	16.5	+0.20/0.50	330	-0/+10.0
BΦ17.0×330	17.0	+0.20/0.50	330	-0/+10.0
BΦ17.5×330	17.5	+0.20/0.50	330	-0/+10.0
BΦ18.0×330	18.0	+0.20/0.50	330	-0/+10.0
BΦ18.5×330	18.5	+0.20/0.50	330	-0/+10.0
BΦ19.0×330	19.0	+0.20/0.50	330	-0/+10.0
BΦ19.5×330	19.5	+0.20/0.50	330	-0/+10.0
BΦ20.0×330	20.0	+0.20/0.50	330	-0/+10.0
BΦ21.0×330	21.0	+0.20/0.65	330	-0/+10.0
BΦ22.0×330	22.0	+0.20/0.65	330	-0/+10.0
BΦ23.0×330	23.0	+0.20/0.65	330	-0/+10.0
BΦ24.0×330	24.0	+0.20/0.65	330	-0/+10.0
BΦ25.0×330	25.0	+0.20/0.65	330	-0/+10.0
BΦ26.0×330	26.0	+0.20/0.65	330	-0/+10.0
BΦ27.0×330	27.0	+0.20/0.65	330	-0/+10.0
BΦ28.0×330	28.0	+0.20/0.65	330	-0/+10.0
BΦ29.0×330	29.0	+0.20/0.65	330	-0/+10.0
BΦ30.0×330	30.0	+0.20/0.65	330	-0/+10.0
BΦ31.0×330	31.0	+0.20/0.65	330	-0/+10.0
BΦ32.0×330	32.0	+0.20/0.65	330	-0/+10.0
BΦ33.0×330	33.0	+0.20/0.65	330	-0/+10.0
BΦ34.0×330	34.0	+0.20/0.65	330	-0/+10.0
BΦ35.0×330	35.0	+0.20/0.65	330	-0/+10.0

WITHOUT COOLANT HOLE

Ground to h6 330mm

h6精磨长棒

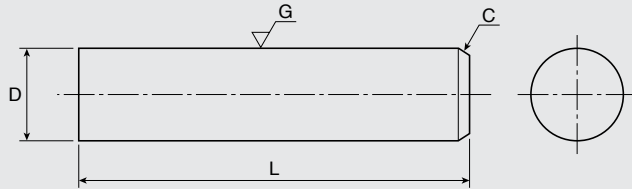


Type	D (mm)	L(mm)	Tolerance L(mm)
Φ1.0×330	1.0	330	0/+10.0
Φ1.5×330	1.5	330	0/+10.0
Φ2.0×330	2.0	330	0/+10.0
Φ2.5×330	2.5	330	0/+10.0
Φ3.0×330	3.0	330	0/+10.0
Φ3.5×330	3.5	330	0/+10.0
Φ4.0×330	4.0	330	0/+10.0
Φ4.5×330	4.5	330	0/+10.0
Φ5.0×330	5.0	330	0/+10.0
Φ5.5×330	5.5	330	0/+10.0
Φ6.0×330	6.0	330	0/+10.0
Φ6.5×330	6.5	330	0/+10.0
Φ7.0×330	7.0	330	0/+10.0
Φ7.5×330	7.5	330	0/+10.0
Φ8.0×330	8.0	330	0/+10.0
Φ8.5×330	8.5	330	0/+10.0
Φ9.0×330	9.0	330	0/+10.0
Φ9.5×330	9.5	330	0/+10.0
Φ10.0×330	10.0	330	0/+10.0
Φ10.5×330	10.5	330	0/+10.0
Φ11.0×330	11.0	330	0/+10.0
Φ11.5×330	11.5	330	0/+10.0
Φ12.0×330	12.0	330	0/+10.0
Φ12.5×330	12.5	330	0/+10.0

Type	D (mm)	L(mm)	Tolerance L(mm)
Φ13×330	13.0	330	0/+10.0
Φ14×330	14.0	330	0/+10.0
Φ15×330	15.0	330	0/+10.0
Φ16×330	16.0	330	0/+10.0
Φ17×330	17.0	330	0/+10.0
Φ18×330	18.0	330	0/+10.0
Φ19×330	19.0	330	0/+10.0
Φ20×330	20.0	330	0/+10.0
Φ21×330	21.0	330	0/+10.0
Φ22×330	22.0	330	0/+10.0
Φ23×330	23.0	330	0/+10.0
Φ24×330	24.0	330	0/+10.0
Φ25×330	25.0	330	0/+10.0
Φ26×330	26.0	330	0/+10.0
Φ28×330	28.0	330	0/+10.0
Φ30×330	30.0	330	0/+10.0
Φ32×330	32.0	330	0/+10.0
Φ33×330	33.0	330	0/+10.0
Φ34×330	34.0	330	0/+10.0
Φ35×330	35.0	330	0/+10.0
Φ36×330	36.0	330	0/+10.0
Φ38×330	38.0	330	0/+10.0
Φ40×330	40.0	330	0/+10.0

WITHOUT COOLANT HOLE >>>

Ground cut-to-length - ISO h6 h6精磨倒角短棒 公制

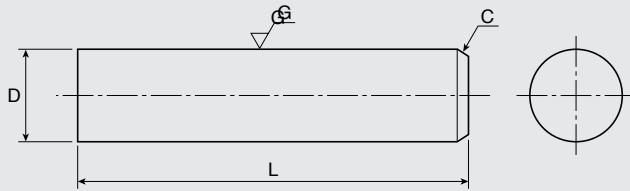


Metric mm

Type	Type	Type
Φ4×50	Φ4×75	Φ4×100
Φ6×50	Φ6×75	Φ6×100
Φ8×60	Φ8×75	Φ8×100
Φ10×75	Φ10×100	Φ10×150
Φ12×75	Φ12×100	Φ12×150
Φ14×100	Φ16×100	Φ16×150
Φ18×100	Φ20×100	Φ20×150

WITHOUT COOLANT HOLE

Ground cut-to-length - ISO h6 h6精磨倒角短棒 英制



D(inch)	Tolerance(inch)	L(inch)	Tolerance(inch)
All types	h6	$L \leq 2.0$	+0.032
		$2.0 < L \leq 4.0$	+0.059
		$4.0 < L \leq 6.3$	+0.079
		$6.3 < L \leq 9.8$	+0.012



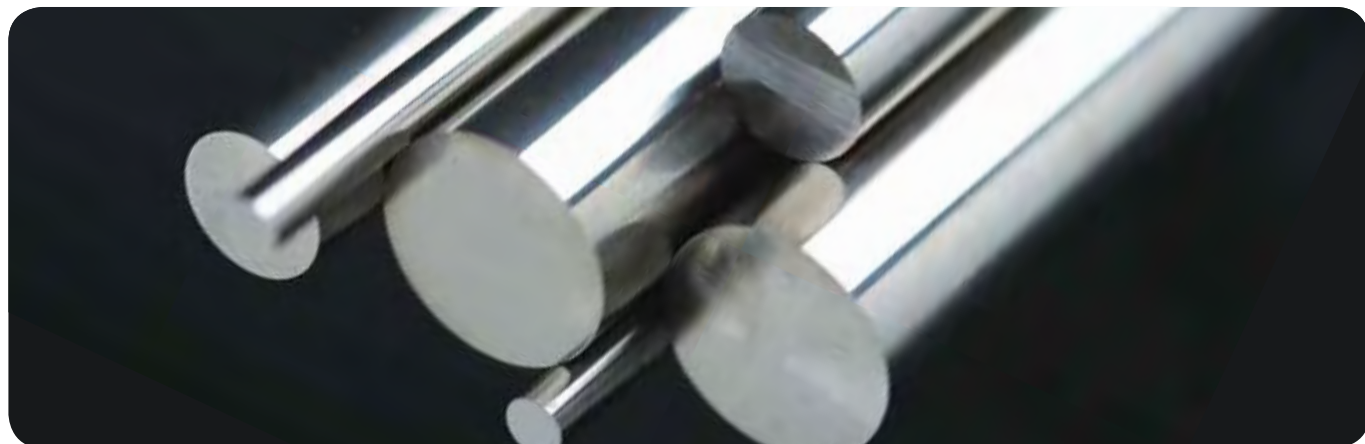
Inch

Type	Type	Type	Type	Type
1/16×1-1/2	.1935×2-3/4	23/64×8	1/2×6	3/4×10
3/32×1.04	13/64×3	3/8×2	1/2×7	3/4×12
3/32×1-3/4	7/32×3	3/8×2-1/2	1/2×8	7/8×4
3/32×2	0.2188×2.5	3/8×3	1/2×8-1/2	7/8×5
1/8×1	1/4×1-1/2	3/8×3-1/4	1/2×12	7/8×6
1/8×1-1/2	1/4×2	3/8×4	9/16×3	1×3
1/8×2	1/4×2-1/2	3/8×4-1/2	9/16×3-1/2	1×4
1/8×2-1/4	1/4×3	3/8×5	9/16×4	1×5
1/8×2-1/2	1/4×3-1/2	3/8×6	9/16×5	1×6
1/8×3	1/4×4	3/8×8	9/16×6	1×7
1/8×4	1/4×4-1/2	3/8×6-1/2	5/8×3	1×8
1/8×4-1/2	1/4×5	3/8×12	5/8×3-1/8	1×9
1/8×12	1/4×6	27/64×4	5/8×3-1/4	1×10
5/32×2	1/4×6-1/2	27/64×4-1/2	5/8×3-1/2	1×12
5/32×2-1/2	1/4×7	7/16×2-1/2	5/8×4	1×12-1/2
5/32×3	1/4×8	7/16×3	5/8×4-1/2	1×13
5/32×12	1/4×12	7/16×3-1/2	5/8×5	1-1/8×4-1/2
.1610×2-1/2	9/32×1-1/2	7/16×4	5/8×6	1-1/4×4
11/64×2-3/4	9/32×2-13/16	7/16×4-1/2	5/8×7	1-1/4×5
11/64×6-1/2	5/16×1-1/4	7/16×6	5/8×8	1-1/4×5-1/2
11/64×7	5/16×2-1/2	7/16×12	5/8×10	1-1/4×6
3/16×1-1/2	5/16×3	1/2×2-1/2	5/8×12	1-1/4×6-1/2
3/16×2	5/16×3-1/2	1/2×3	3/4×3	1-1/4×7
3/16×2-3/16	5/16×3-3/4	1/2×3-1/4	3/4×4	1-1/4×7-1/2
3/16×2-1/4	5/16×4	1/2×3-1/2	3/4×5	1-1/4×8
3/16×2-1/2	5/16×6	1/2×4	3/4×6	1-1/4×9
3/16×3	5/16×12	1/2×4-1/2	3/4×7	1-1/4×12-1/2
3/16×4	11/32×4	1/2×5	3/4×8	1-1/2×7-1/2
3/16×6				

WITHOUT COOLANT HOLE >>>

PCB Cutting tool

PCB工具棒 公制



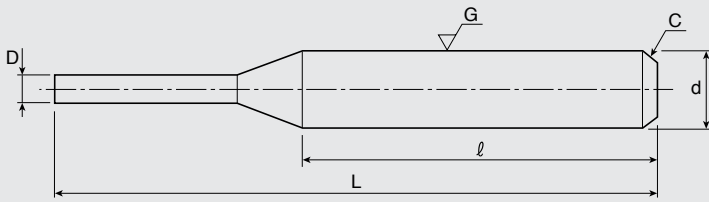
Type	Diameter(mm)	Tolerance(mm)	Length(mm)	Tolerance(mm)
BΦ3.21×38.5	3.21	0/+0.02	38.5	-0.10/+0.2
BΦ3.22×40	3.22	0/+0.04	40.0	0/+0.5
BΦ3.22×45	3.22	0/+0.04	45.0	0/+0.5
BΦ3.25×50	3.25	0/+0.05	50.0	0/+0.5
BΦ3.25×38.7	3.25	0/+0.05	38.7	-0.20/+0.3
BΦ3.5×38.5	3.50	+0.05/0.25	38.5	±0.20
BΦ4.0×38.5	4.00	+0.05/0.25	38.5	±0.20
BΦ4.5×38.5	4.50	+0.05/0.25	38.5	±0.20
BΦ5.0×38.5	5.00	+0.05/0.25	38.5	±0.20
BΦ5.5×38.5	5.50	+0.05/0.25	38.5	±0.20
BΦ6.0×38.5	6.00	+0.05/0.25	38.5	±0.20
BΦ6.5×38.5	6.50	+0.05/0.25	38.5	±0.20
BΦ1.2×110	1.20	0/+0.2	110.0	0/+2
BΦ1.35×110	1.35	0/+0.2	110.0	0/+2
BΦ1.5×110	1.50	0/+0.2	110.0	0/+2
BΦ1.8×110	1.80	0/+0.2	110.0	0/+2
BΦ2.0×110	2.00	0/+0.2	110.0	0/+2

Other types				
BΦ3.5×12.5	BΦ3.5×13.0	BΦ3.5×13.2	BΦ2.0×24.5	BΦ3.25×12.5
BΦ4.0×12.5	BΦ4.0×13.0	BΦ4.0×13.2	BΦ2.0×25.5	BΦ3.25×12.7
BΦ4.5×12.5	BΦ4.5×13.0	BΦ4.5×13.2	BΦ2.0×26	BΦ3.25×13.1
BΦ5.0×12.5	BΦ5.0×13.0	BΦ5.0×13.2	BΦ2.0×28	BΦ3.25×14.5
BΦ5.5×12.5	BΦ5.5×13.0	BΦ5.5×13.2	BΦ2.0×31	BΦ3.3×13.1
BΦ6.0×12.5	BΦ6.0×13.0	BΦ6.0×13.2	BΦ3.26×14.0	BΦ4.0×46
BΦ6.5×12.5	BΦ6.5×13.0	BΦ6.5×13.2	BΦ3.25×11.5	BΦ6.0×40
BΦ7.0×12.5	BΦ7.0×13.0	BΦ7.0×13.2	BΦ3.25×12.0	BΦ6.0×50

Special Shape



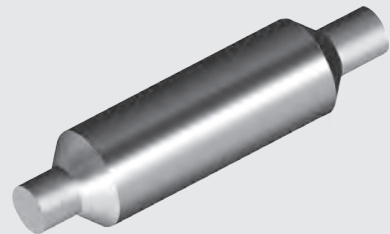
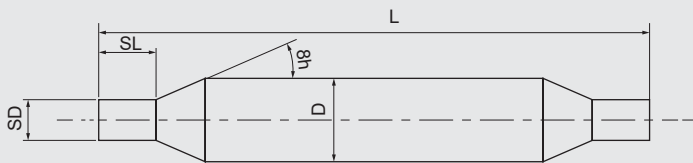
Ground ROD



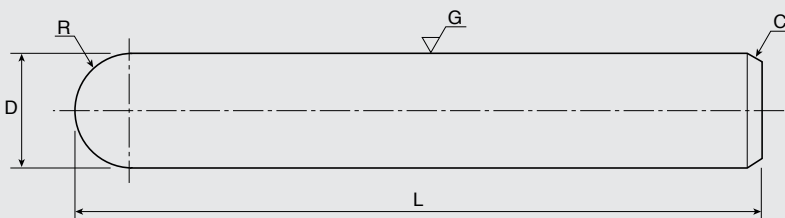
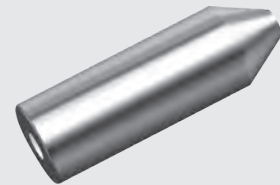
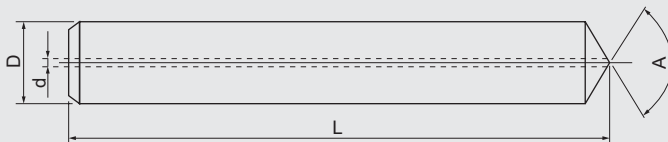
D(mm)	Tolerance(mm)	L(mm)	Tolerance(mm)
d	h6	l	+0.4
D	+0.1	L	+1.0



Step Rods



Rods with Taper End(With Hole)



On request, we supply special rod blanks with your specification.

我们按照您的要求可提供异形圆棒制品



株洲美特优硬质合金有限公司

地址：湖南省株洲荷塘区金山工业园 412000

电话：0731-28117278

传真：0731-28117279

E-mail : mty-998@vip.163.com

www.meet-you.cn

Zhuzhou Meeyou Cemented Carbide,.Co,.Ltd

471 JINSHAN ROAD,HETANG DISTRICT,ZHUZHOU,
HUNAN,CHINA 412000

Tel:008673128420963 Fax:008673128117279

US Number:+1(989)786-0147

sales@meetyoucarbide.com

www.meetyoucarbide.com